

South Fairmount

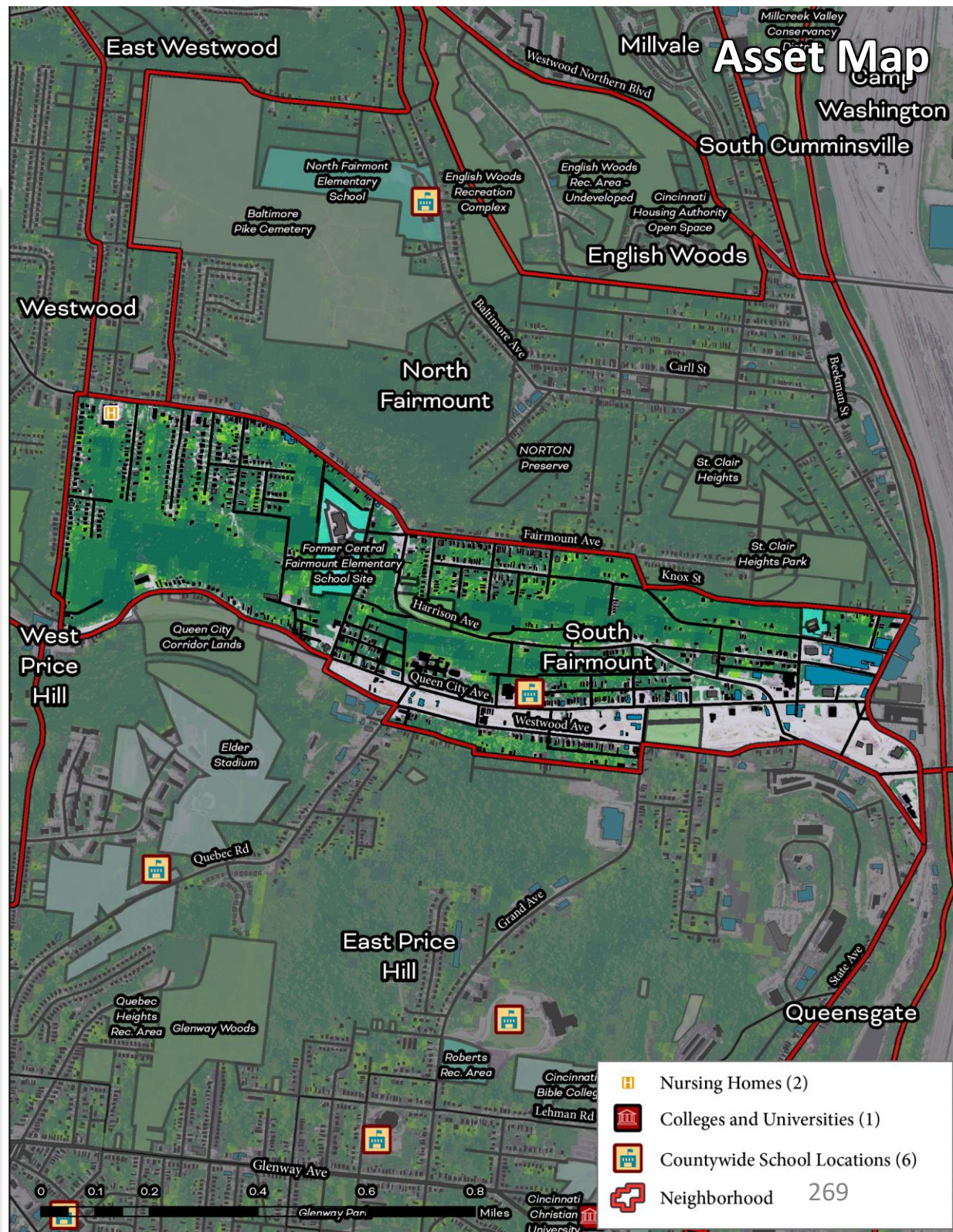
Cincinnati Neighborhood Profile

South Fairmount is a predominantly Black neighborhood (50.6% Black, 35.9% White) with a population of 2,131 residents. The neighborhood has a community council (South Fairmount Community Council) and is a part of the Port of Greater Cincinnati Development Authority community development corporation. South Fairmount's most recent community plan is the Cincinnati Choice Neighborhoods Transformation Plan (2014).

Life expectancy in South Fairmount is 66.1 years (ranked 46th of neighborhoods assessed). There is high disease prevalence, including asthma (15.2% of residents, ranked 44th), Cancer (6%, ranked 33rd), Diabetes (22.1%, ranked 41st), high blood pressure (46.7%, ranked 40th), kidney disease (4.8%, ranked 41st), and obesity (52.2%, ranked 46th). Of South Fairmount residents, 19.2% lack health insurance (ranked 47th), 5.1% have independent living difficulties (ranked 43rd), and 22.8% of residents live with a disability (ranked 48th).

South Fairmount ranks 18th in tree canopy coverage (30.4%), and 14th in heat island exposure (0.27 heat index). The neighborhood ranks 43rd in land in parks and greenspaces (5.4%). South Fairmount residents face low to extreme exposure to built environmental hazards relative to the other neighborhoods, including extreme potential lead paint exposure, very high proximity to water pollution sources, high diesel particulate and PM2.5 levels in the air, high respiratory disease risk from air pollution, and high proximity to potentially toxic industrial activity.

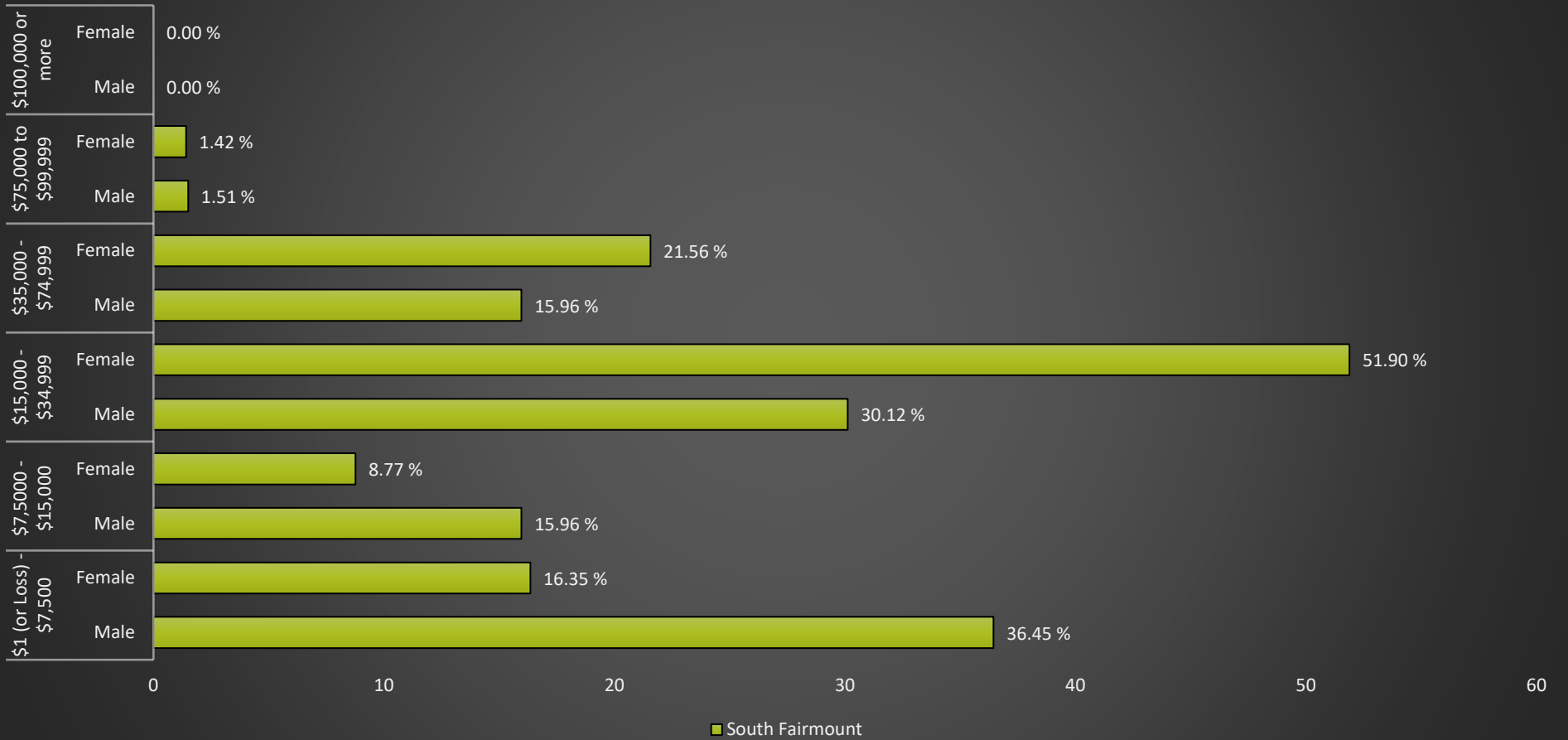
South Fairmount has an educational attainment index of 35. Of South Fairmount residents, 49.6% live in poverty (ranked 42nd) and 45.1% of households receive SNAP benefits (ranked 41st). The majority of housing units are renter-occupied (71.8%). The average energy cost in South Fairmount is 6.8% of residents' income (ranked 42nd). South Fairmount ranks 38th in vehicle access and 15% of residents lack a vehicle.



South Fairmount

Cincinnati Neighborhood Profile

South Fairmount: Annual Income by Gender



South Fairmount Notable Indicators

<i>Life Expectancy</i>	<i>Persons Living w/ Disability</i>	<i>PM2.5 and Diesel Particulate Levels in Air, Proximity to Potentially Toxic Industrial Activity, and Respiratory Disease Risk from Air Pollution</i>
66.1 years (Ranked 46th highest)	22.8% (Ranked 48th lowest)	High

South Fairmount

Cincinnati Neighborhood Profile

People			
Indicator	Rank	%	# of Persons
Population	-	-	2,131
Persons over 65	16	9.8%	208
Persons 17 and Under	37	27.3%	582
Children Living w/ Grandparents	48	7.5%	160
Race/Ethnicity:			
Black	-	50.6%	1,079
white	-	35.9%	766
Asian	-	0.0%	-
Other	-	13.4%	286
Latinx	-	0.7%	14
Persons 5 and Older in Households w/ Limited English Ability	2	0.0%	-

Health			
Indicator	Rank	Value	
Life Expectancy	46	66.1 years	-
Disease Prevalence Estimates:			
	Rank of % w/Condition	% with Condition	Persons with Condition
Asthma	44	15.2%	325
Cancer	33	6.0%	128
Diabetes	41	22.1%	471
High Blood Pressure	40	46.7%	995
Heart Disease	46	11.3%	242
Kidney Disease	41	4.8%	102
Obesity	46	52.2%	1,113
Lack of Health Insurance	43	19.2%	410
Persons w/ Independent Living Difficulty	37	4.1%	88
Persons Living w/ Disability	48	22.8%	485

Ecosystems and Infrastructure		
Indicator	Rank	Value
Tree Canopy Coverage	18	30.4%
Greenness of Land Surface	22	56.8%
Percent Land in Parks and Greenspaces	42	5.4%
Impervious Surface	28	37%
Heat Island Exposure	14	0.27
Walkability	-	Below Average
Persons w/ Low-Income and Low Food Access	33	50.6%
Transit Accessibility	-	Low
Daytime Population vs. Resident Population	21	83.1%
Commuters Leaving Each Day	-	557
Commuters Using Public Transit	30	10.6%

South Fairmount

Cincinnati Neighborhood Profile

Socio-Economic Indicators			
Indicator	Rank	%	#
Persons Living in Poverty	42	49.6%	1,058
SNAP Recipient Households	41	45.1%	386
Educational Attainment:			
Less than High School	-	12.2%	-
HS or Equivalent	-	21.4%	-
Some College	-	16.4%	-
Associate's Degree	-	4.8%	-
Bachelor's Degree or Higher	-	7.4%	-
Educational Attainment Index	35	0.32	-
Extreme Housing Burdens:			
Renter-Occupied Housing (as % of All Housing Units)	33	71.8%	614
Renters Spending 30% of Income or More on Rent + Utilities	24	27.7%	237
Renters Spending 50% of Income or More on Rent + Utilities	29	15.4%	132
Homeowners Spending 30% of Income or More on Mortgage + Utilities	13	15.4%	37
Average Energy Costs (as % of Income)	42	6.8%	-
Persons without Vehicle Access	38	15.0%	320

Built Environmental Hazards		
Indicator	Relative Exposure Level	Value
Traffic Exposure	High	-
Potential Lead Paint Exposure (Houses Built pre-1960)	Extreme	87.77%
Cancer Risk from Air Pollution	Moderate	-
Respiratory Disease Risk from Air Pollution	High	-
Proximity to Water Pollution Sources	Very High	-
PM2.5 Levels in Air, µg/m3	High	9.75
Ozone Concentration, ppb	Low	46.48
Diesel Particulate in Air, µg/m3	High	0.99
Proximity to Superfund Sites	Low	-
Proximity to Potentially Toxic Industrial Activity	High	-
Proximity to Hazardous Waste Treatment and Disposal Facilities	Moderate	-

Neighborhood Planning	
Indicator	Description
Community Councils	South Fairmount Community Council
Community Development Corporations	Port of Greater Cincinnati Development Authority
Community Plans	Cincinnati Choice Neighborhoods Transformation Plan (2014); Lick Run Master Plan (2012)